

ABOUT TAFISA®

Tafisa® operates one of North America’s largest particleboard and TFL manufacturing plants. Inaugurated in 1992, our facility in the Lac-Mégantic region of Quebec employs nearly 400 people and runs seven days a week, covering an area of almost 71,000 square meters.

We serve both residential and commercial markets across North America and are recognized as the global leader in manufacturing sustainable products. Our panels are crafted from 100% reclaimed or recycled wood fiber, allowing you to create unique, healthy, and sustainable spaces with Tafisa® decorative panels.

To learn more about our company and explore our Prelude, Sommet, and Lummia series, scan the QR codes below. If you need further information, please don’t hesitate to contact us.

PRELUDE® SOMMET® LUMMIA^{MC}



SCAN TO CONTACT US



SCAN TO LEARN MORE ABOUT OUR PRODUCT

INSPIRING EXCELLENCE

In our pursuit of sustainability, we are reducing the amount of printed materials to lessen our environmental impact. Enclosed, you will find digital versions of our latest brochures and pamphlets.

Thank you for supporting our eco-friendly initiatives by using and re-using this “Scan and Learn” pamphlet.

SCAN AND LEARN

2025



SOMMET®

SOMMET COLLECTION

The Sommet® series from Tafisa® has become the benchmark for design thanks to its innovative character and two-sided synchronized embossing technology. Offering textures inspired by noble woods such as walnut and teak, the VIVA™ and BRAVA™ creations stand out for the richness and precision of their patterns, which reveal the true nature of wood.

VIVA^{MC}
BRAVA^{MC}



VIVA| Weekend Getaway
TFL M2003 (Y) | HPL T2003 (VA)



SCAN TO LEARN MORE ABOUT SOMMET



Tafisa.ca



06/2025





REWOOD® TECHNOLOGY

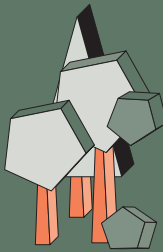
For over 20 years, Tafisa®’s REWOOD® technology has been contributing to the industry’s move towards a circular economy. As a pioneer in North America, Tafisa® uses post-industrial and post-consumer wood in the manufacture of its particleboard. Post-consumer wood comes from deconstruction sites and damaged wooden pallets. After careful sorting by local sorting centres, the wood is recycled by Tafisa®, giving it a new life.



244 000 t.
OF RECYCLED POST-CONSUMER
WOOD ANNUALLY



700 000 t.
CARBON STORED IN
OUR PANELS ANNUALLY



2 000 000
SAVED TREES
EVERY YEAR



PRÉLUDE®
NEW
materia

MATERIA COLLECTION

The latest addition to our Prélude Series, Materia, stands out as the ideal solution for those seeking an affordable matte surface without compromising on style. This new texture enhances Tafisa®’s product offering by giving surfaces a sleek, modern aesthetic.

TFL : Decorative panels, HPL : High-pressure Laminates N : New	White TFL L175(M) HPL T175(MA)	Summer Drops TFL L202(M) HPL Non disponible	Moonlight TFL L761(M) HPL T761(MA)
	Froth of the Sea TFL L080(M) HPL Non disponible	Daybreak TFL L764(M) HPL T764(MA)	Midnight Sun TFL L765(M) HPL T765(MA)
	Gardenia TFL L775(M) HPL T775(MA)	Mornig Dew TFL L763(M) HPL T763(MA)	Black TFL L203(M) HPL T203(MA)
	Puff Cream TFL L781(M) HPL T781(MA)	Sand Castle TFL L782(M) HPL T782(MA)	Tiramisu TFL L783(M) HPL T783(MA)
			Secret Garden TFL L784(M) HPL T784(MA)



karisma

KARISMA COLLECTION

Our Karisma collection has become a great success. This texture is distinguished by its oak and concrete motifs, as well as the recent additions of spalted maple and Brazilian acacia, which create elegant, realistic and authentic colours.

KARISMA MOULDING PROGRAM

The Tafisa® mouldings program offers door mouldings and accessory mouldings perfectly matched to its decorative panels. It also offers short delivery times and low minimum order quantities, all sold directly by Tafisa®.



LUMMIA™
TECHNOLOGY

GET INSPIRED BY LUMMIA’S NEW COLOURS

Always at the forefront of trends, Tafisa® is expanding its Lummia collection to make it the most extensive range of decorative gloss and matte surfaces. The emphasis is on sophistication and luxury, with the introduction of essential neutral tones and lighter shades of blue, Sage leaf and Terrarossa.



MOULDING
PROGRAM



HIGH-PRESSURE
LAMINATES
PROGRAM



EDGEBANDING
PROGRAM

